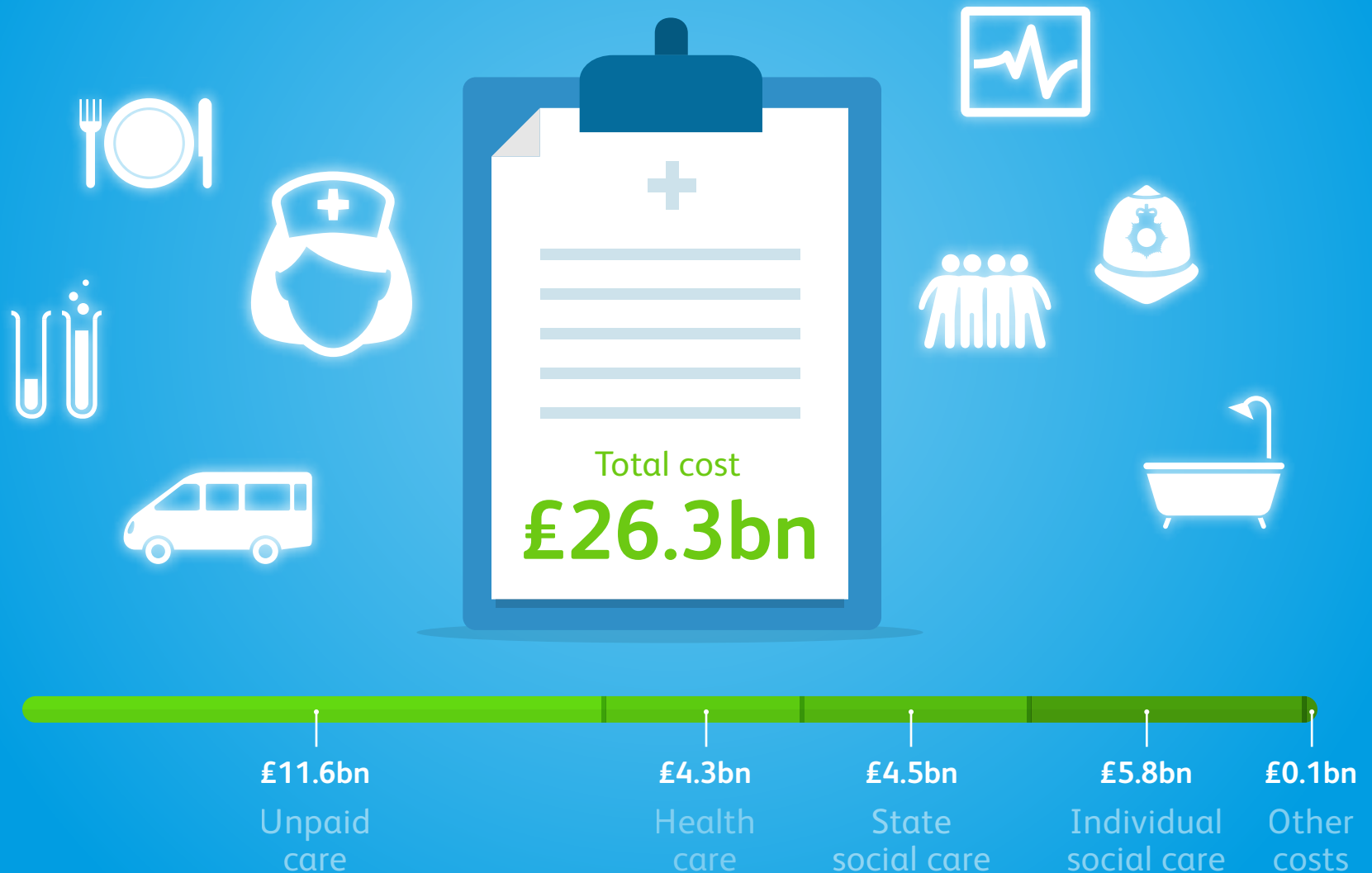


# Dementia costs the UK £26.3 billion a year

That's enough to pay the annual energy bill of every household in the country.



# Unpaid carers: overworked, under supported

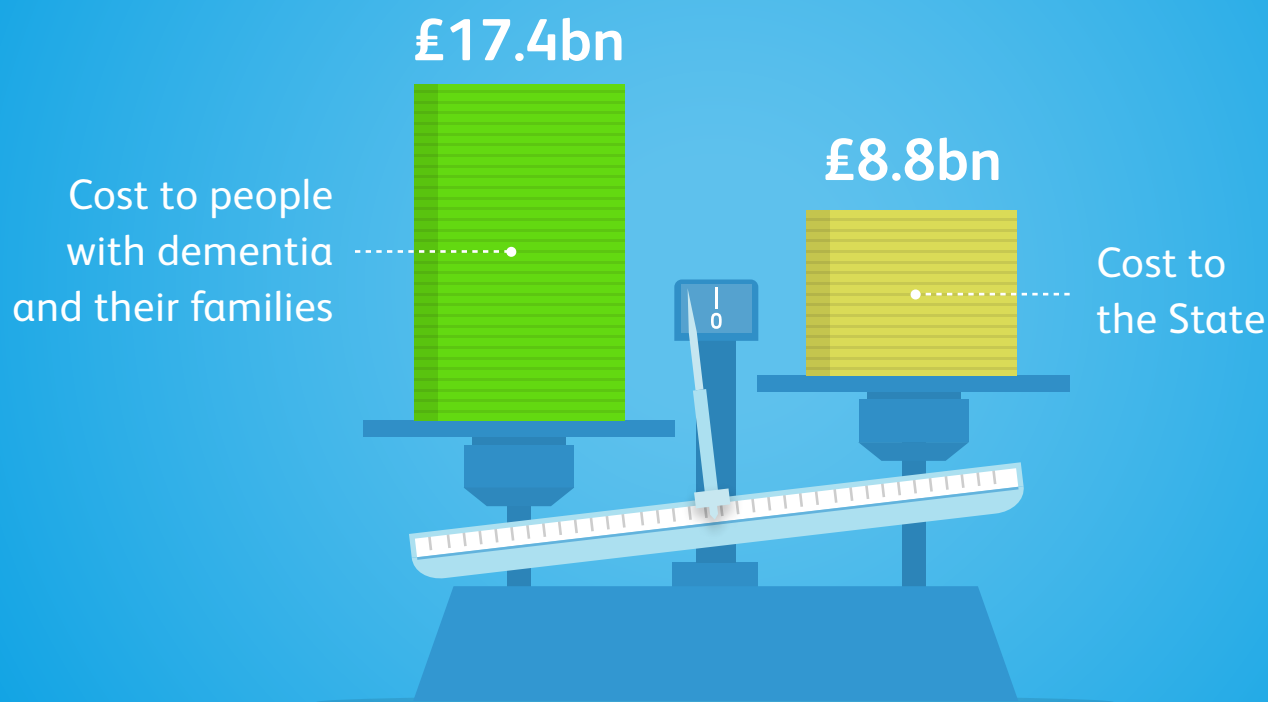


1,340,000,000 hours

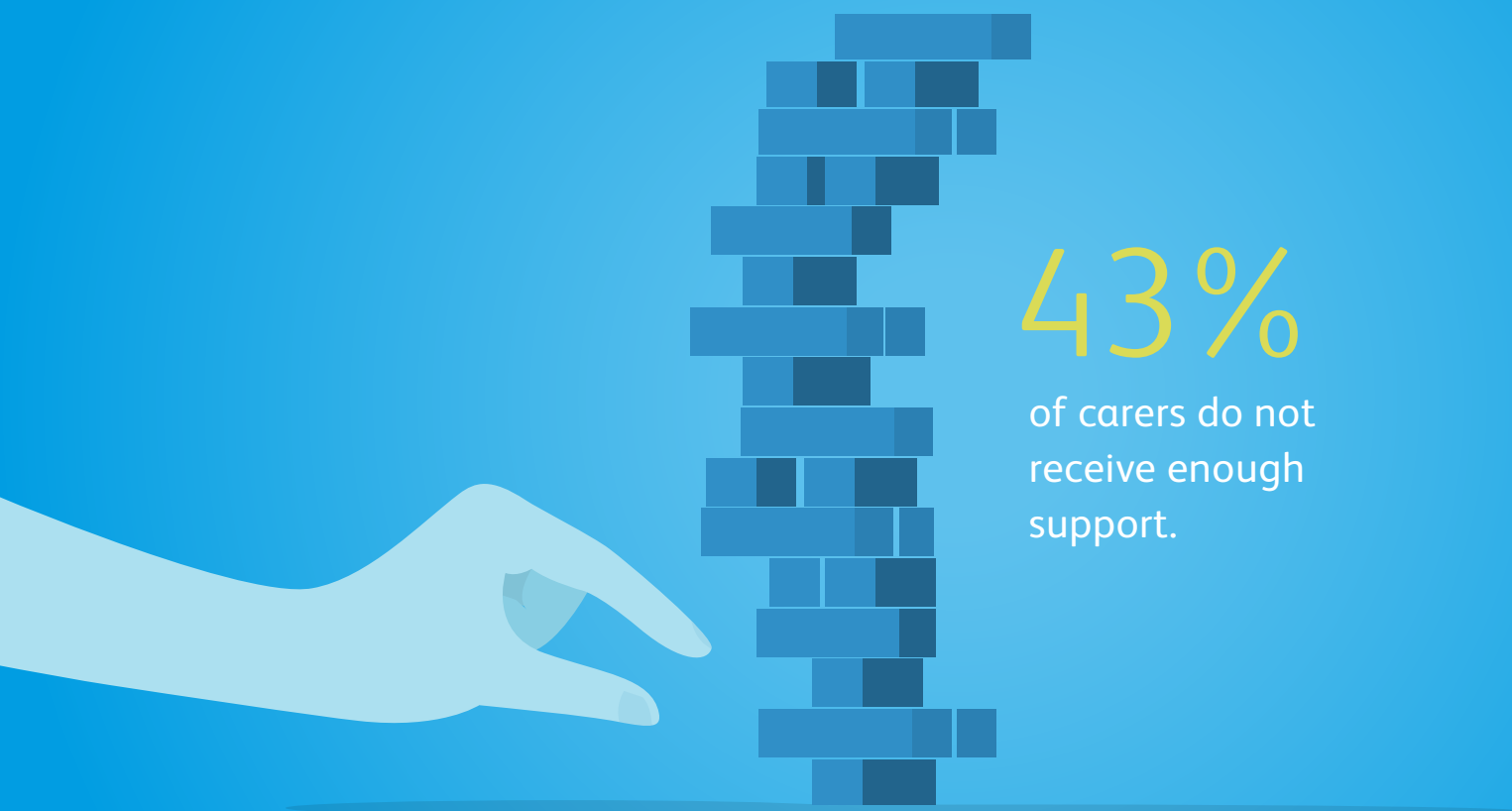
were spent caring for people with dementia in 2013.  
That's more than 150,000 years.

# Unpaid carers: overworked, under supported

Two thirds of the cost of dementia is paid by people with dementia and their families.



# Unpaid carers: overworked, under supported

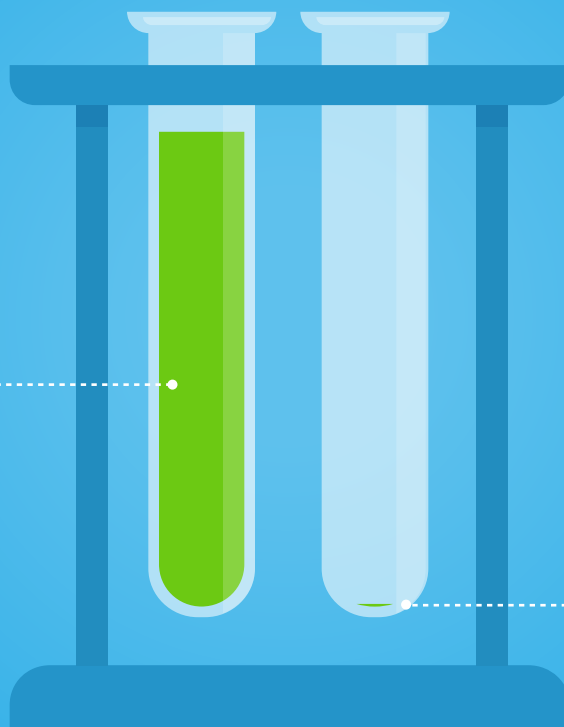


43%

of carers do not  
receive enough  
support.

# We need greater investment in dementia research

Dementia costs over £30,000 per person with dementia each year...



...yet only £90 per person is spent on research.

# Too many people with dementia aren't living as well as they could

61%

felt depressed or  
anxious recently.



# Too many people with dementia aren't living as well as they could

40%

felt lonely recently.



# Too many people with dementia aren't living as well as they could

52%

do not feel they get enough support from the government.





# Too many people with dementia aren't living as well as they could

34%

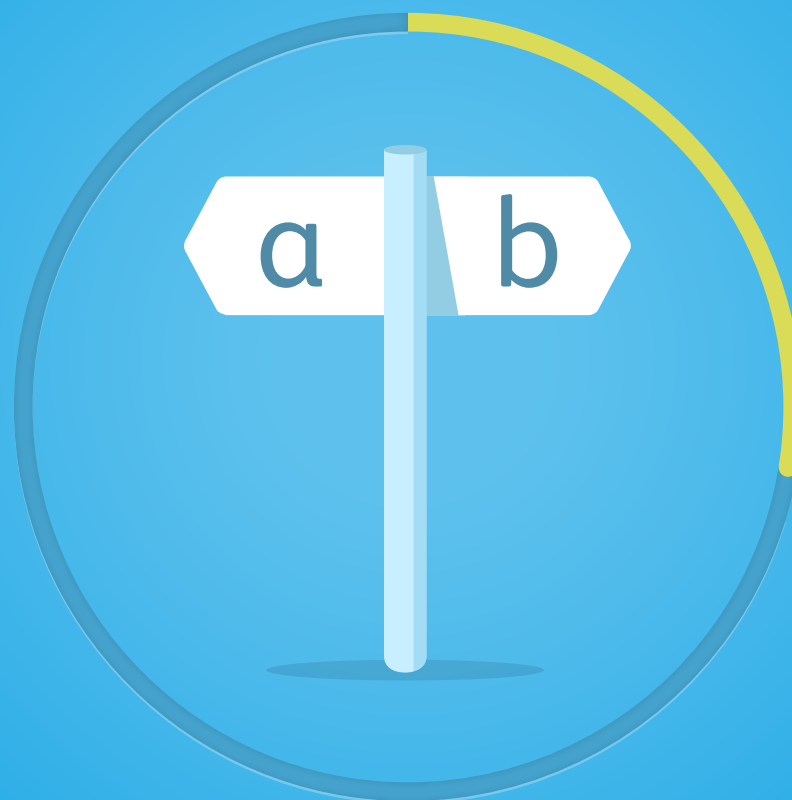
do not feel part of their community.



# Too many people with dementia aren't living as well as they could

28%

are not able to make decisions about how they spend their time.



# Too many people with dementia aren't living as well as they could

18%

are not living well with dementia.



# No two people with dementia are the same – services need to reflect the needs of individuals



## 7 out of 10

people are living with another medical  
condition or disability as well as dementia.

# No two people with dementia are the same – services need to reflect the needs of individuals



## 1 out of 20

people living with dementia are under the age of 65.

# 850,000 people live with dementia in the UK

...if we don't take action this number is predicted to rise to over two million by 2051.

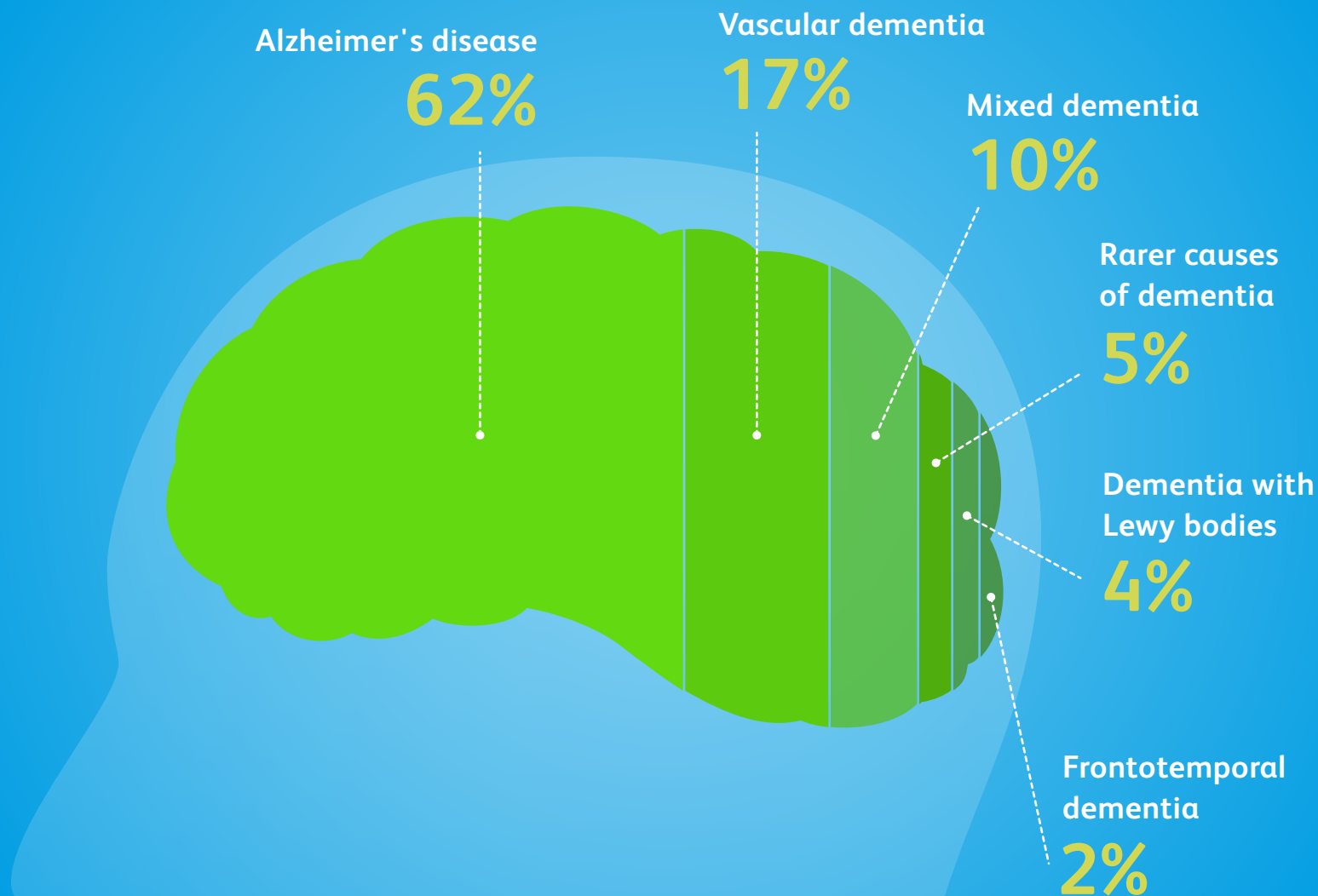


**225,000** people develop dementia every year,  
that's roughly one person every three minutes



# What is dementia?

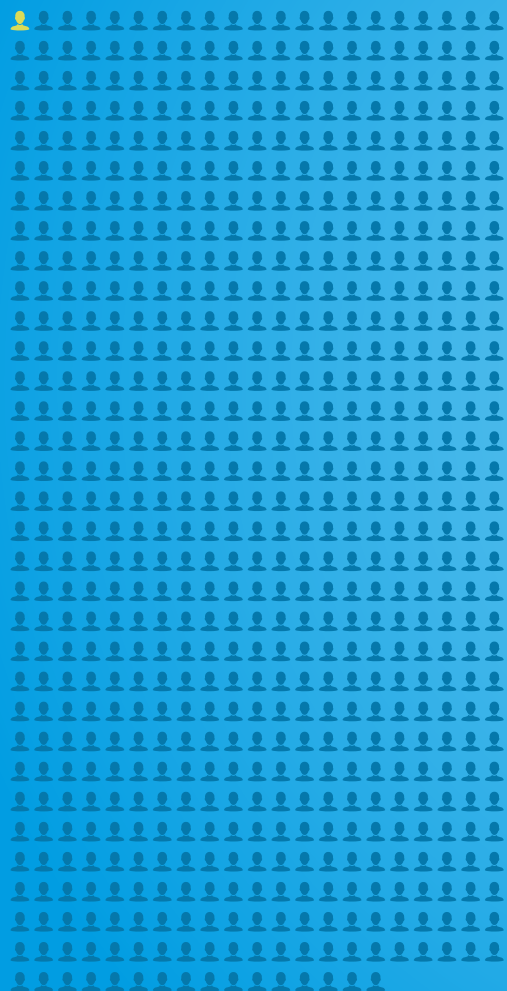
Dementia is caused by diseases of the brain, the most common of which is Alzheimer's.





# The risk of dementia increases with age

**1 in 688 people**  
under 65 have dementia.



**1 in 14 people**  
over 65 have dementia.



**1 in 6 people**  
over 80 have dementia.



# Dementia across the UK

## England

685,812

## Wales

43,477

## Scotland

66,773

## Northern Ireland

19,765

## North East

34,289

## North West

89,783

## Yorkshire and Humber

67,630

## East Midlands

60,254

## West Midlands

73,406

## East of England

82,516

## London

72,009

## South East

121,512

## South West

84,413

